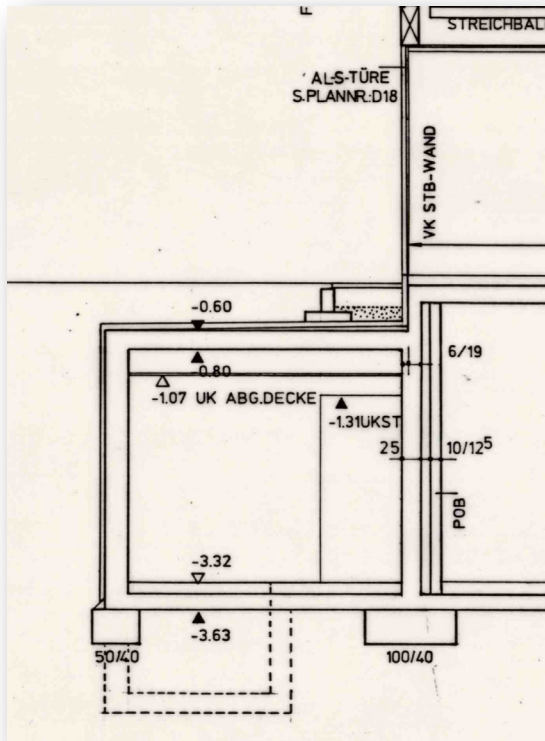
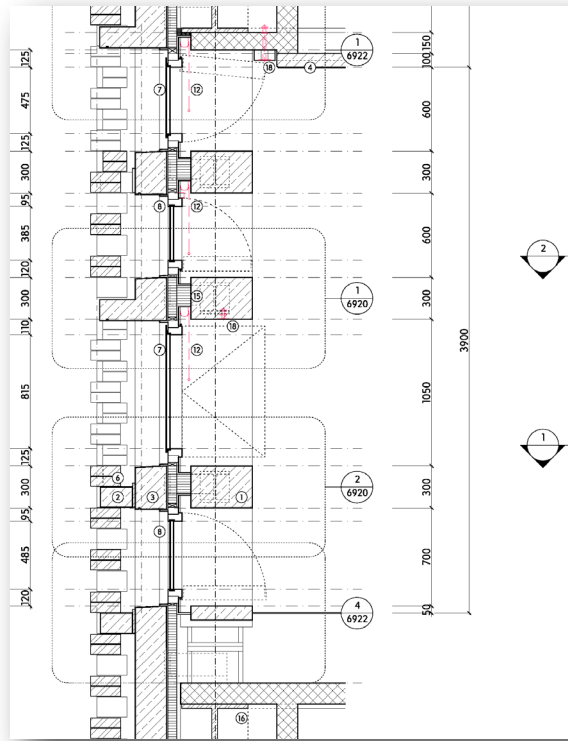


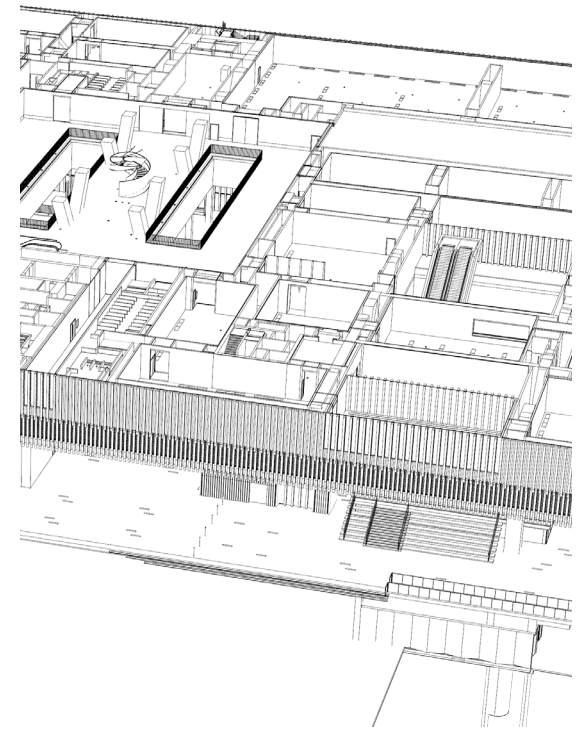
*Virtual Reality*



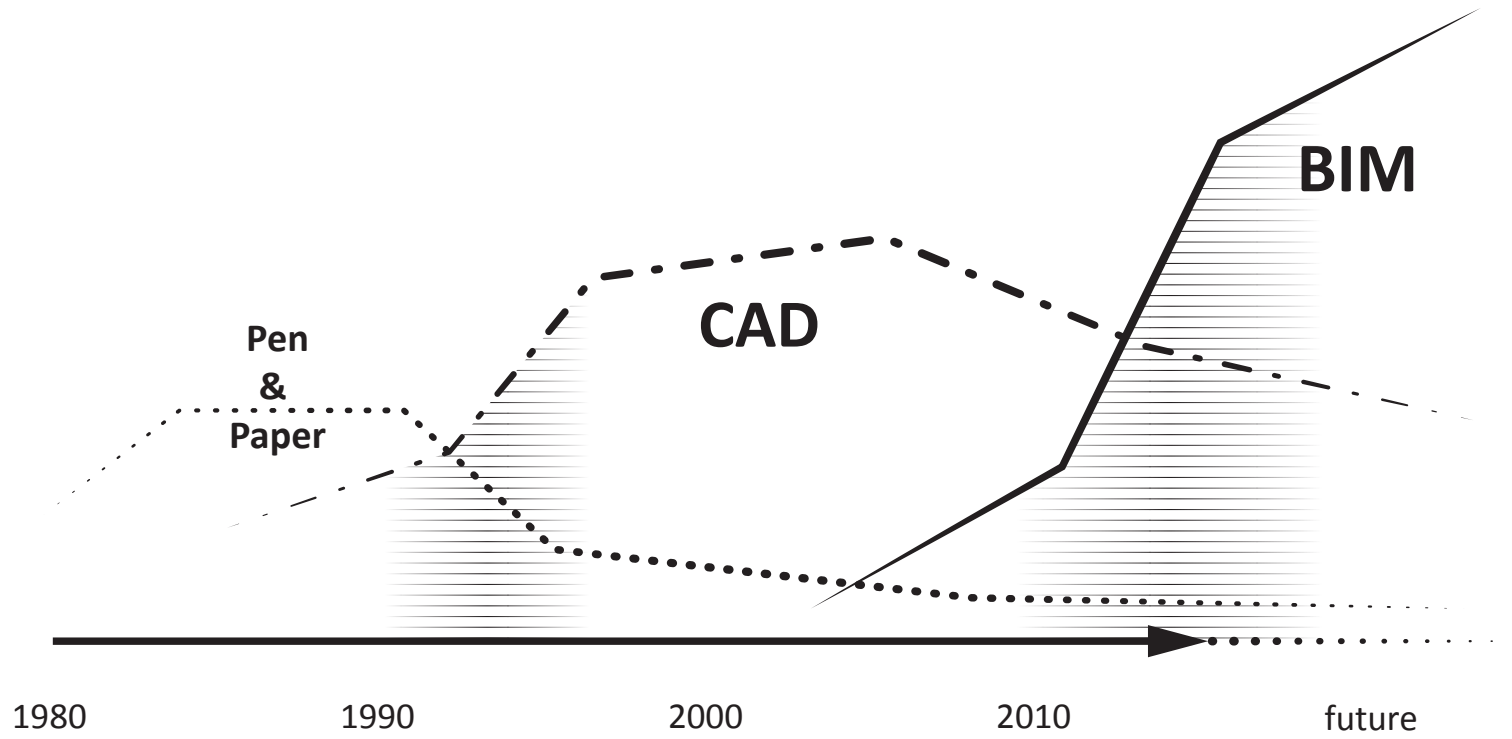
**1991**  
**Papier**  
**Bleistift / Tusche**



**2010**  
**Digitales Papier**  
**CAD / PDF**



**2017**  
**3D**  
**Digitale Modelle / Daten**



*digitale Transformation*



# *Digital Technologies @ HdM*

*3DM*

*CODE*

*BIM*

*CAD*

*CNC*

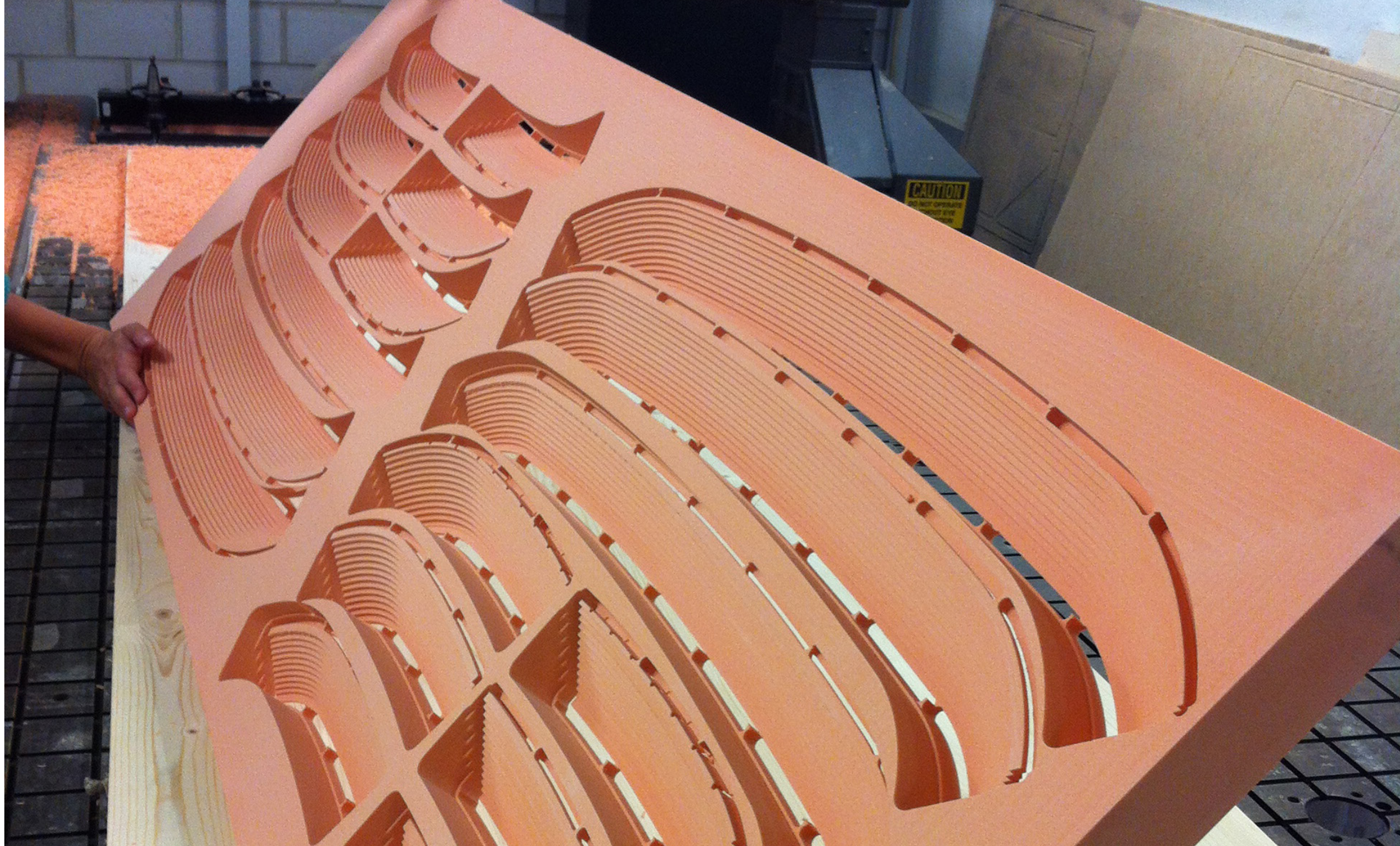
*VIZ*

*VR*

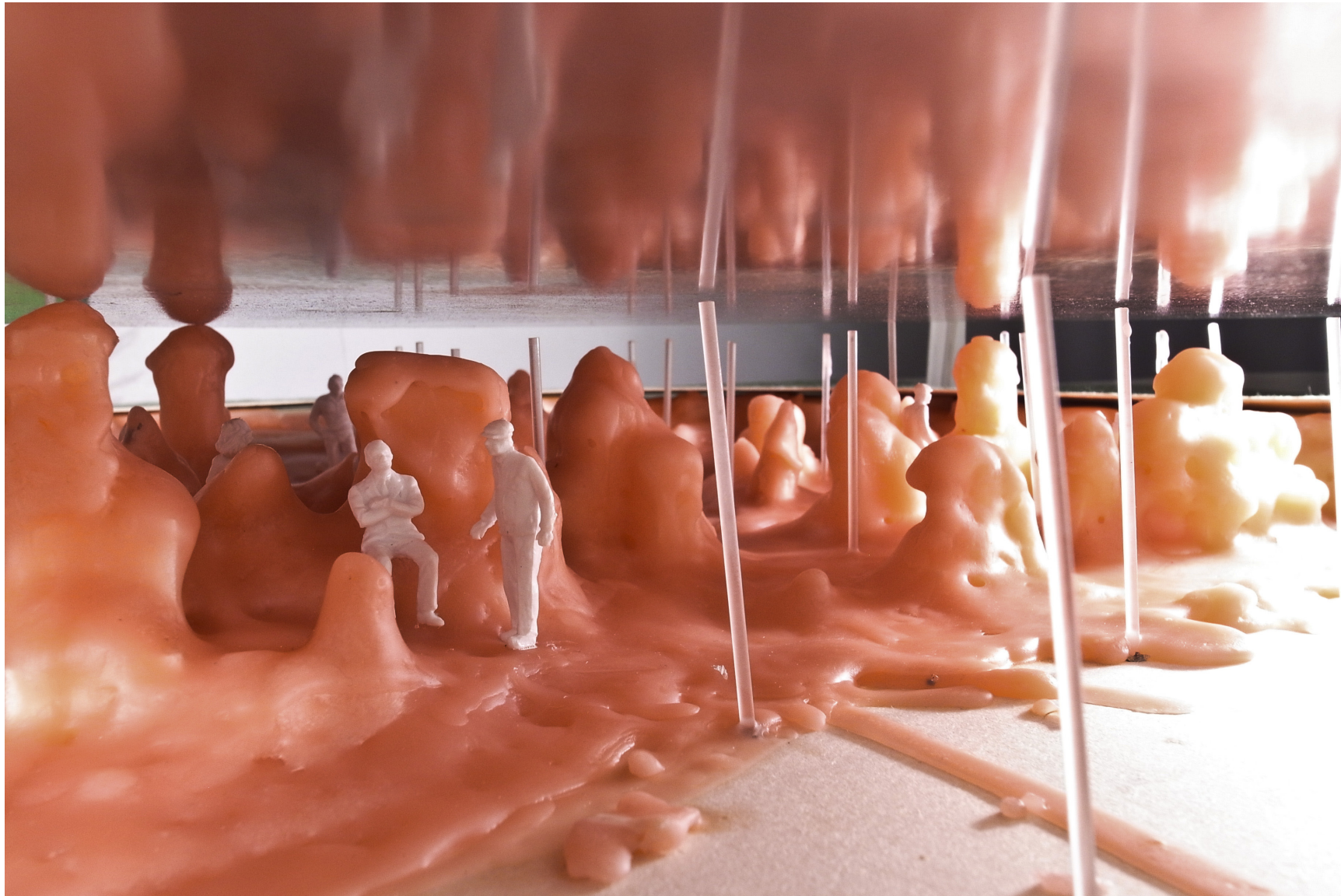
*digitaler Modelbau*

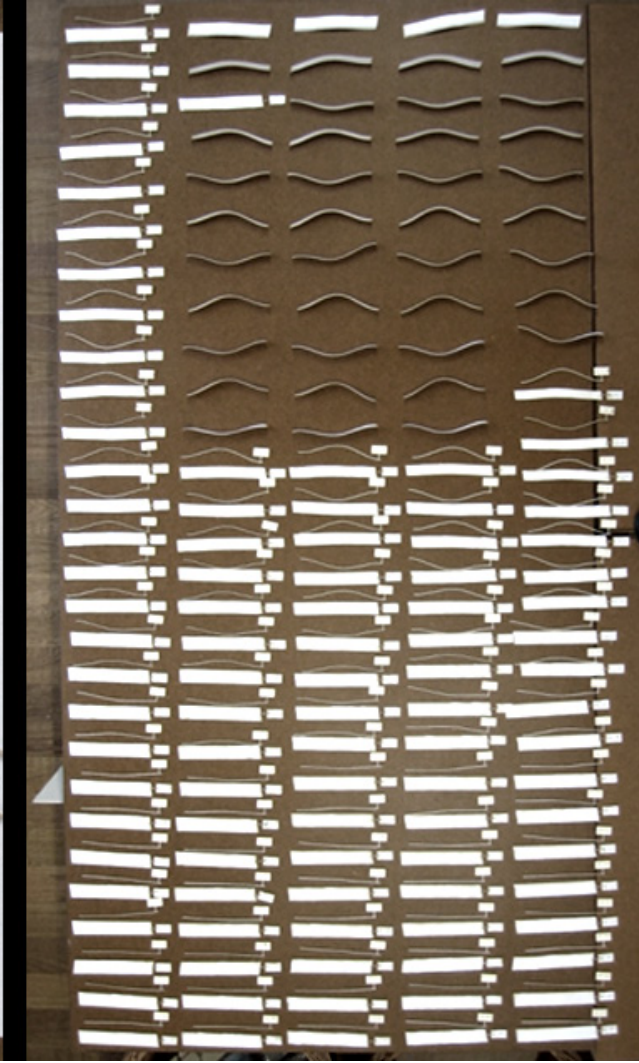
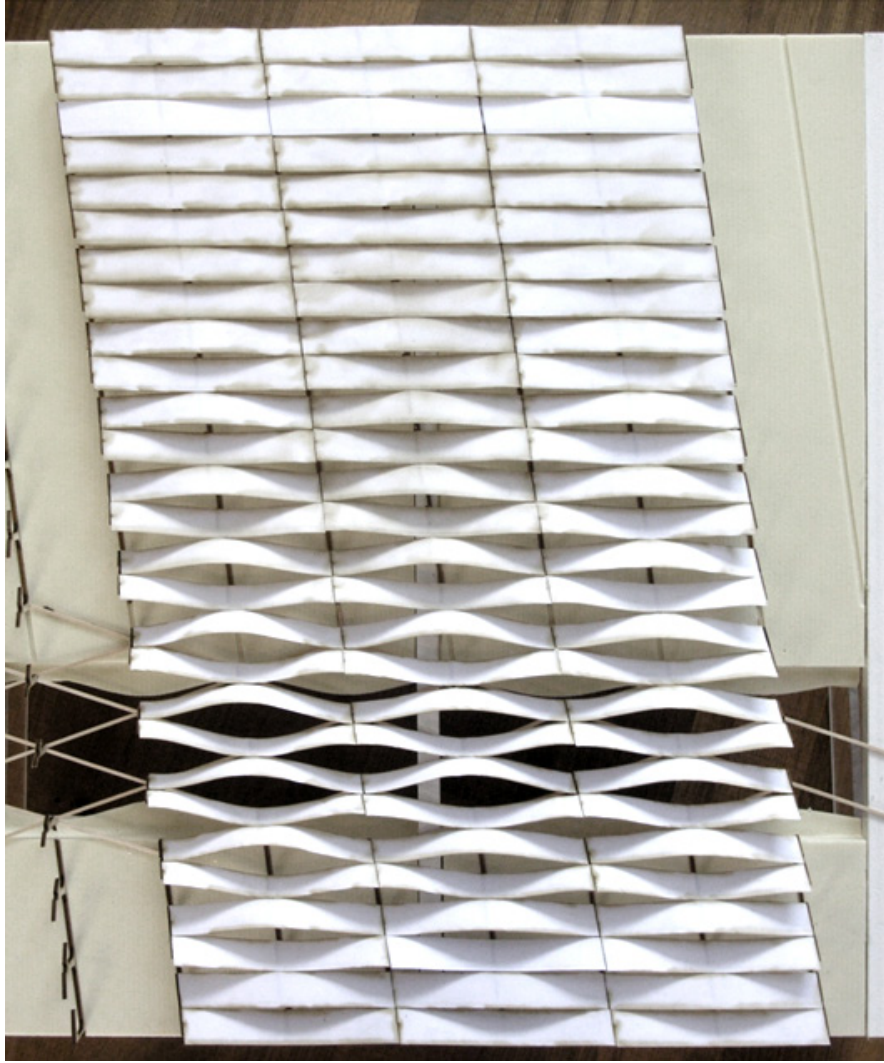


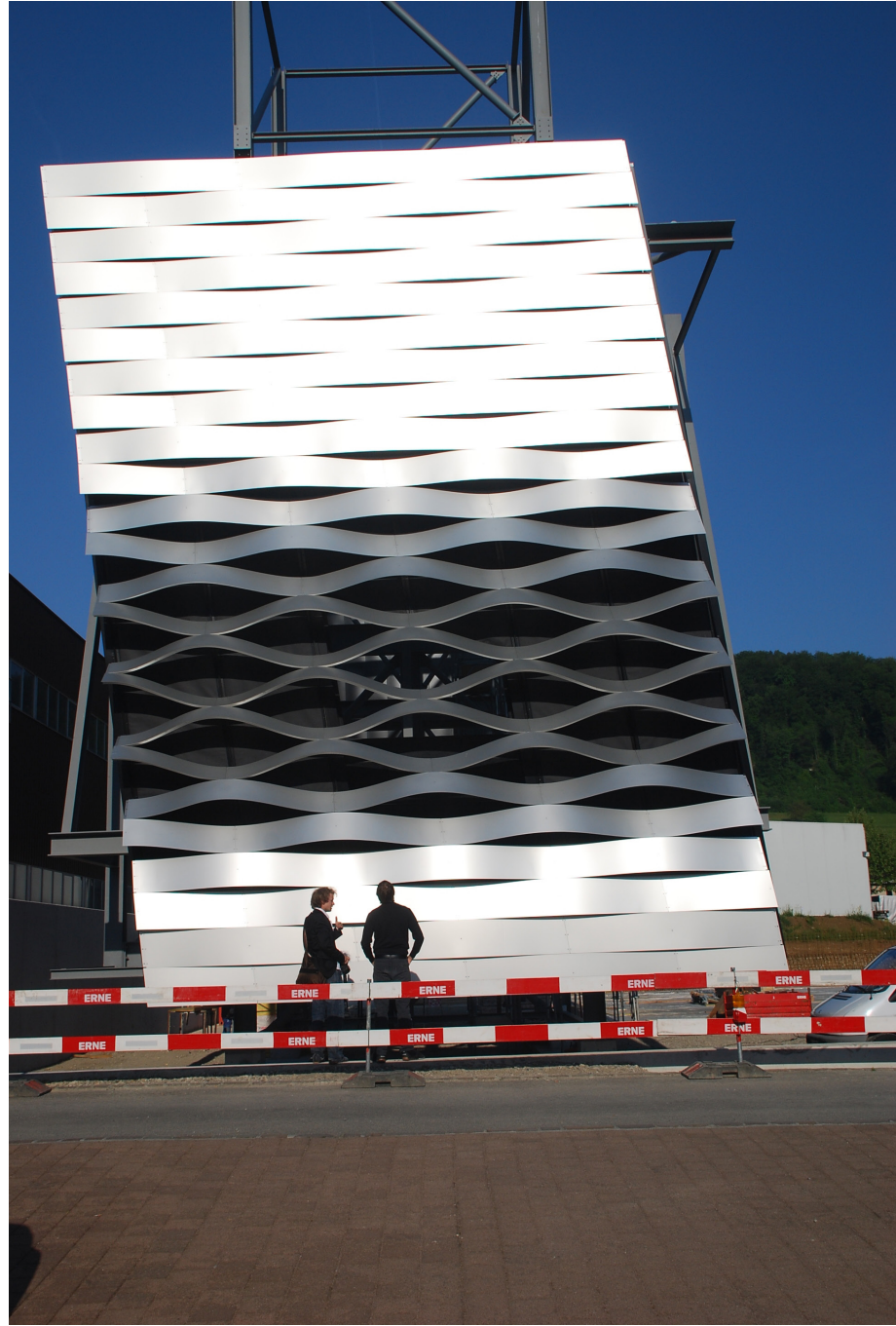


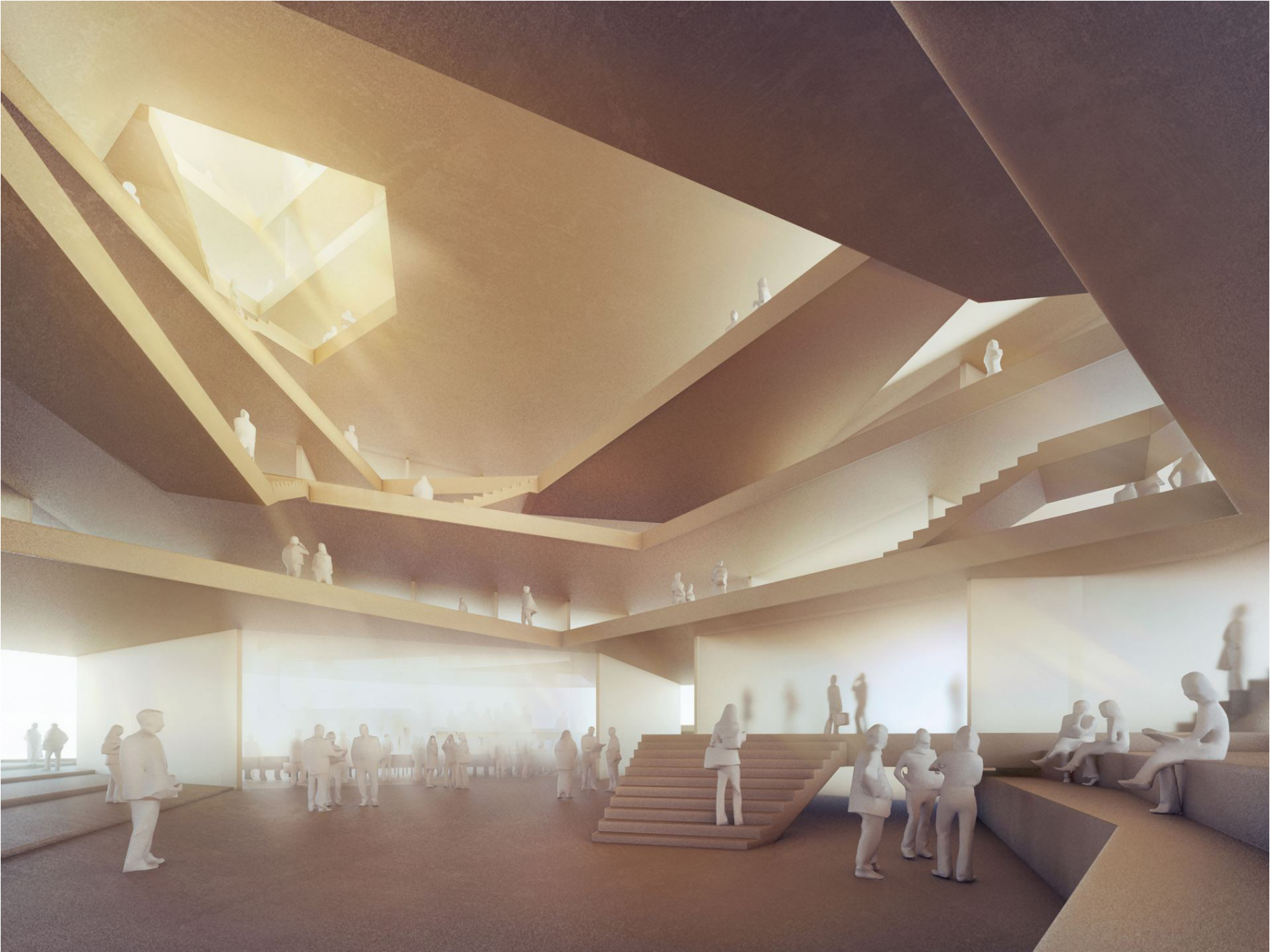








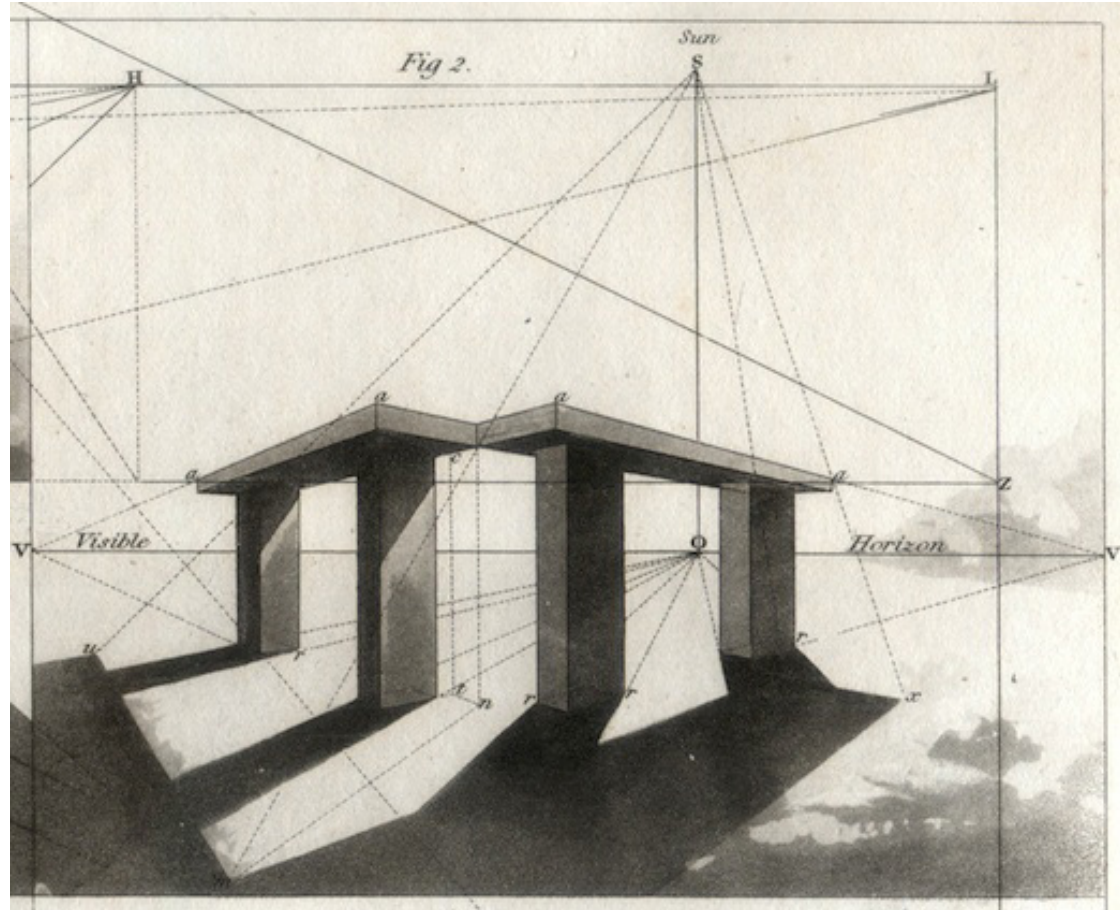






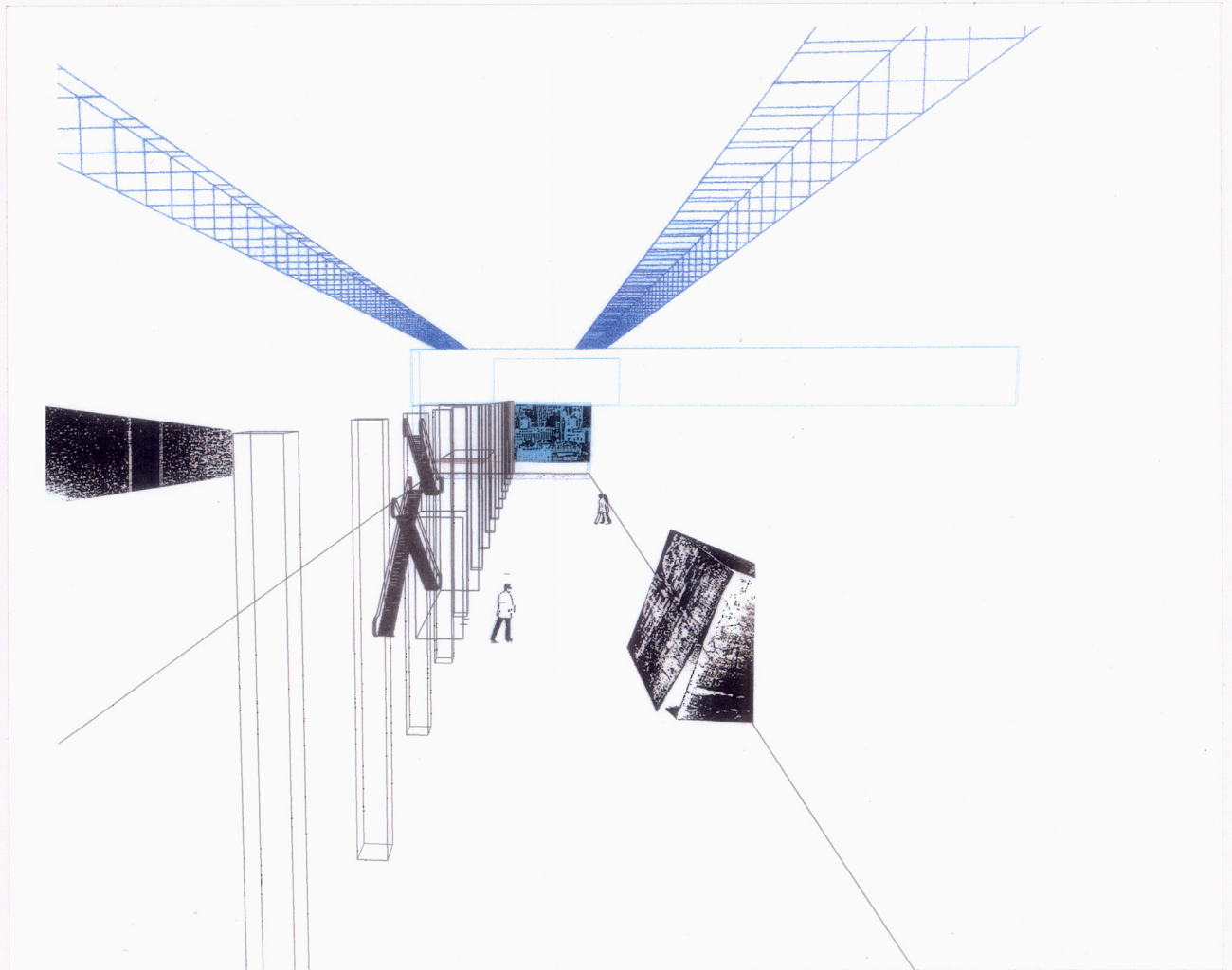










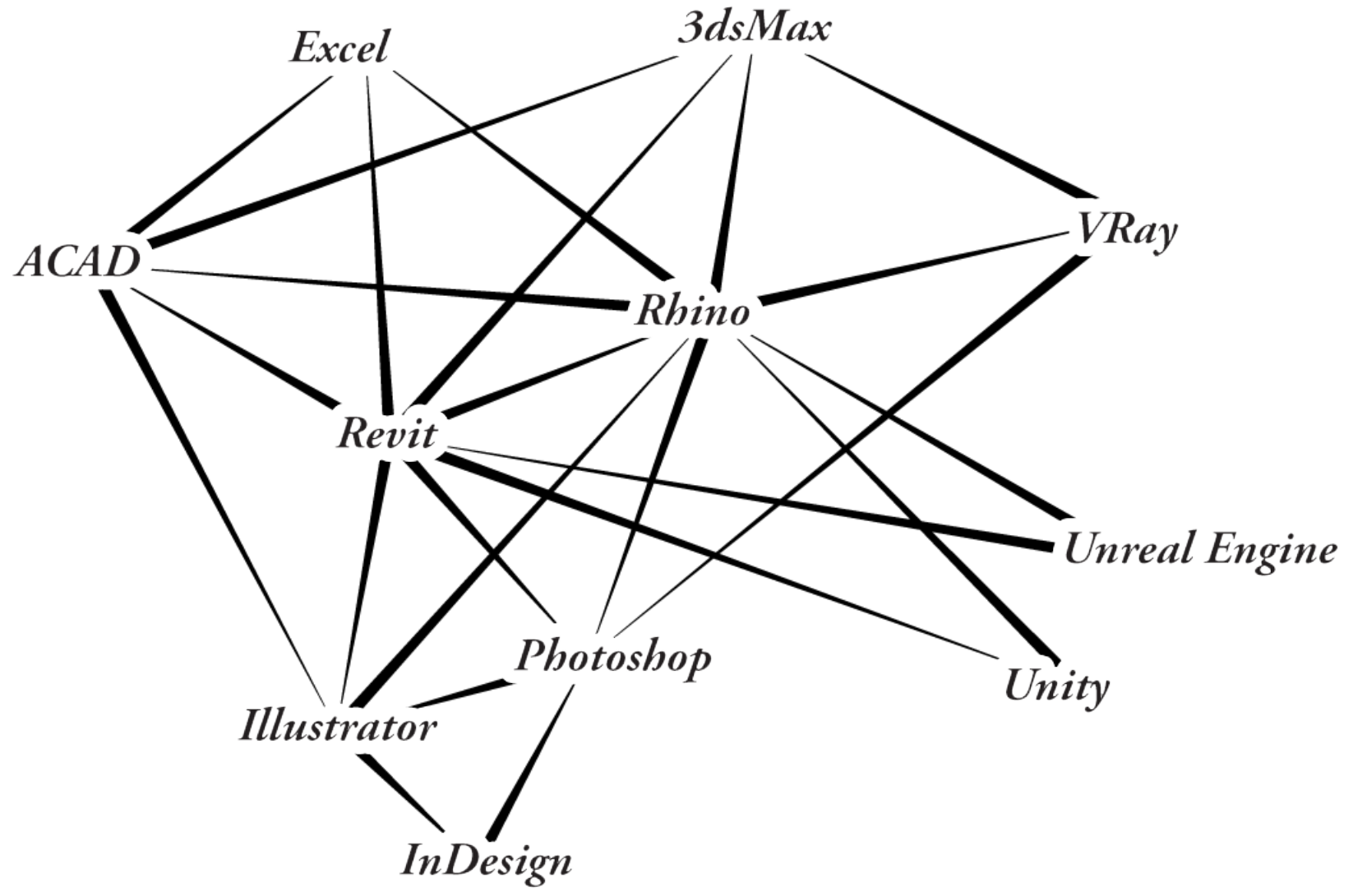


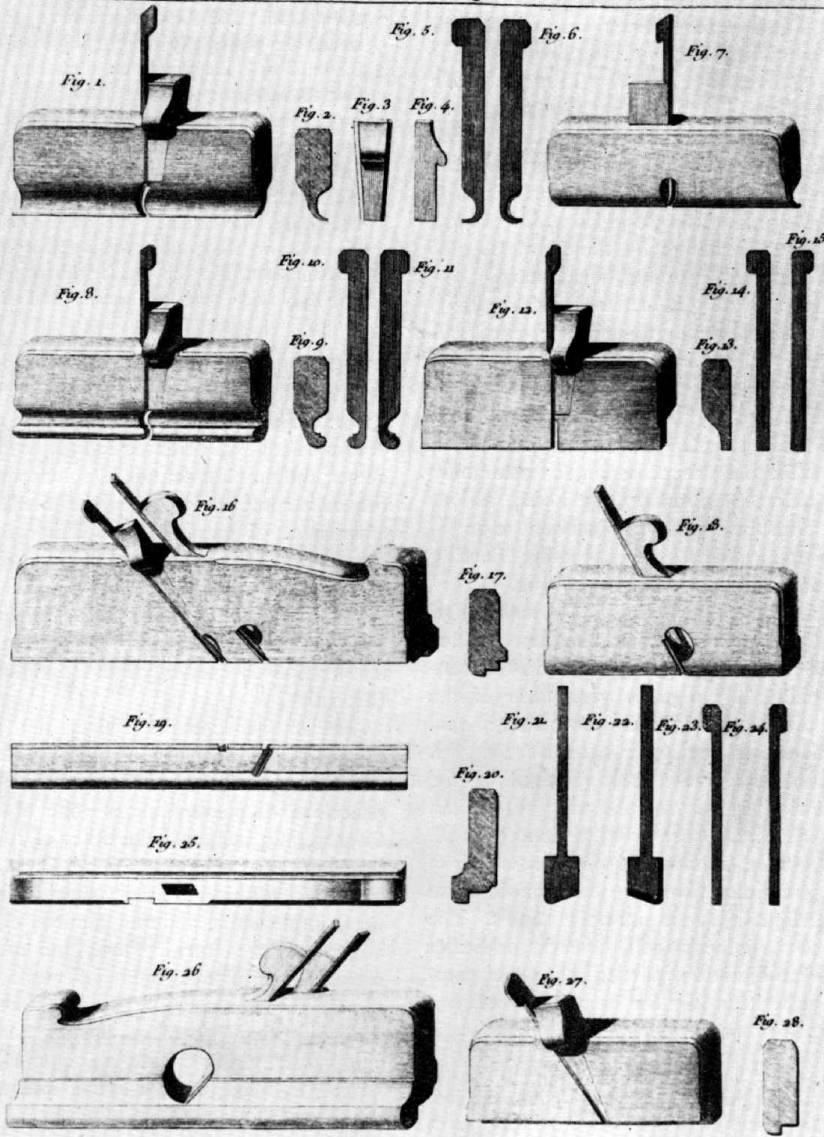
*models*

*sketches*

*drawings*

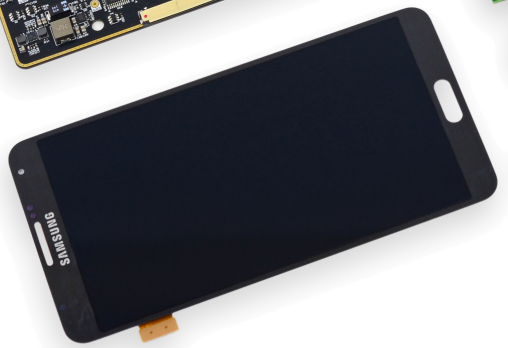
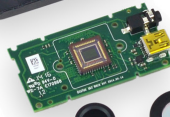
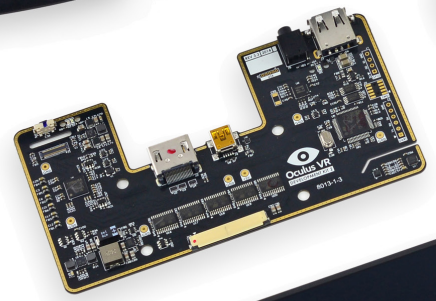
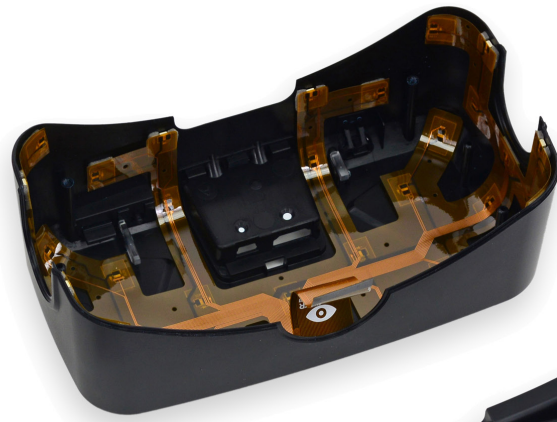
*images*





*Virtual Reality*





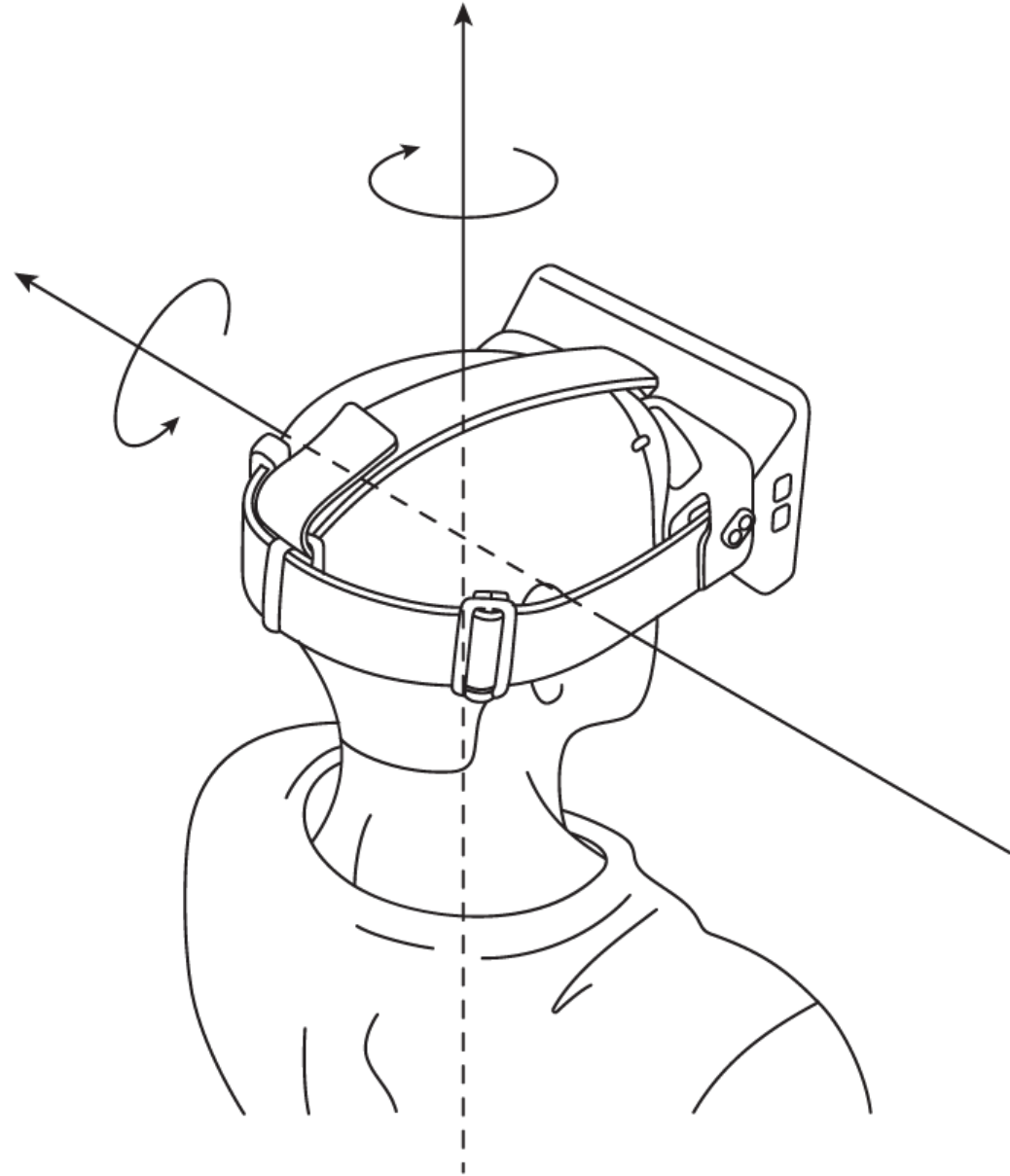
# *VR Technology*





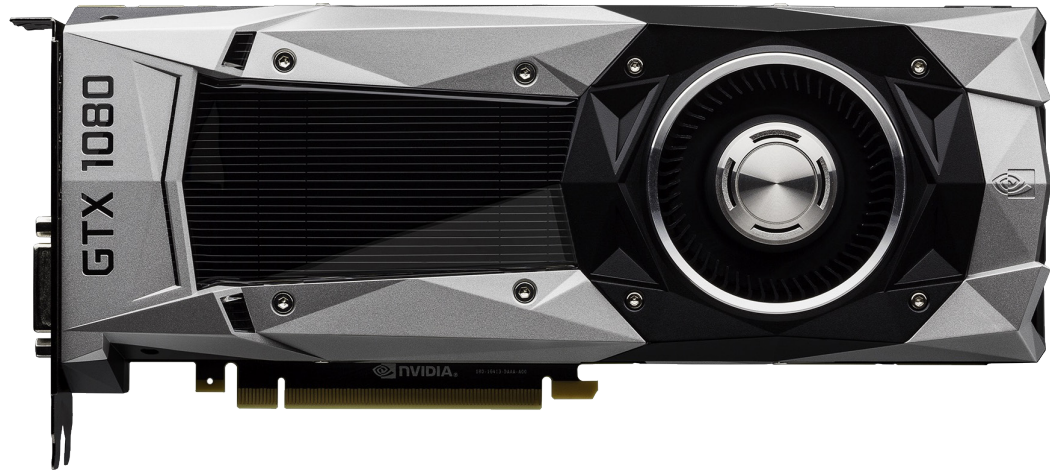
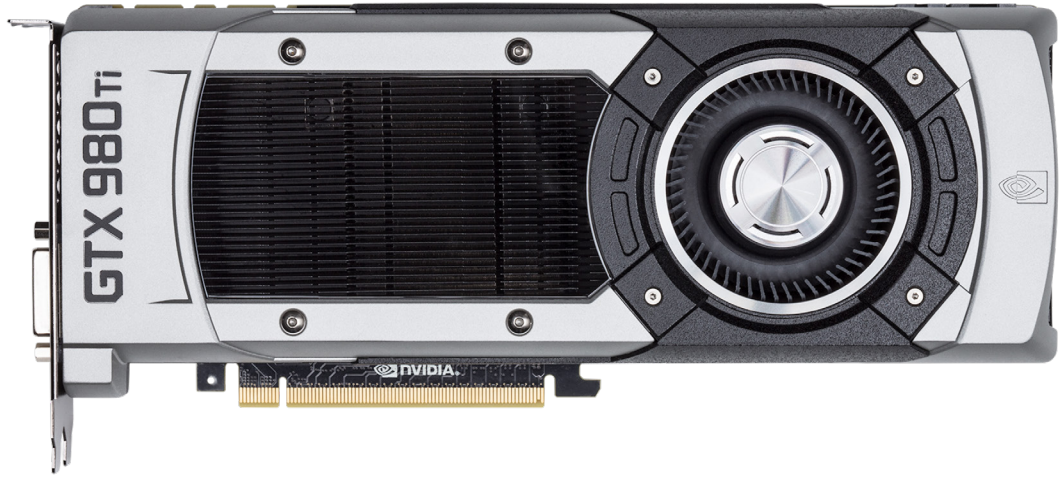
THE LONDON  
STEREOSCOPE COMPANY  
5, CHERCHER LANE







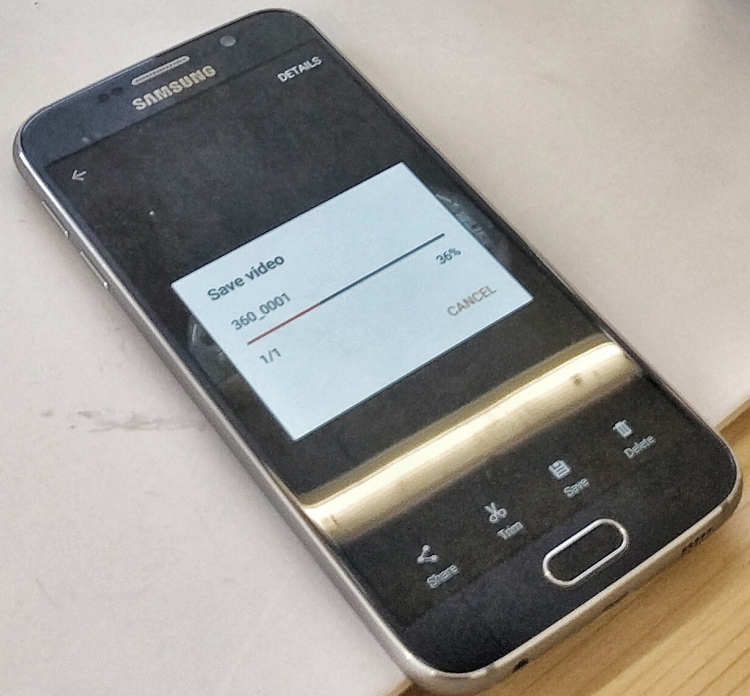
1440 x 2560 pixels (~538 ppi pixel density)







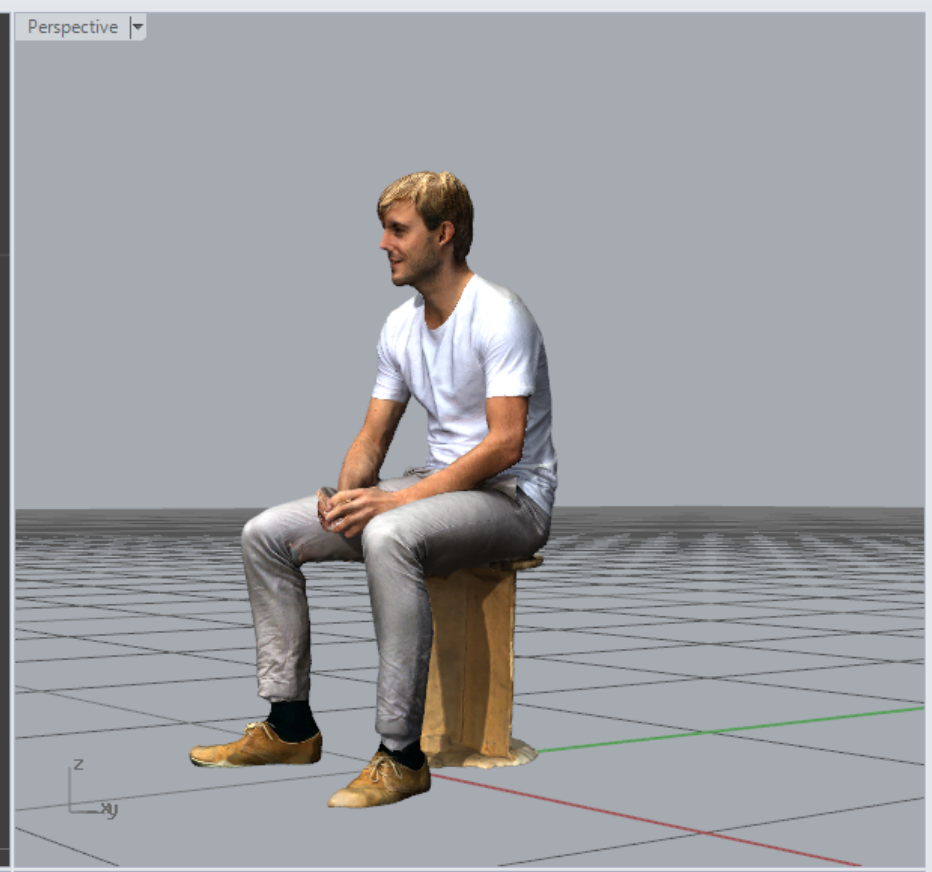
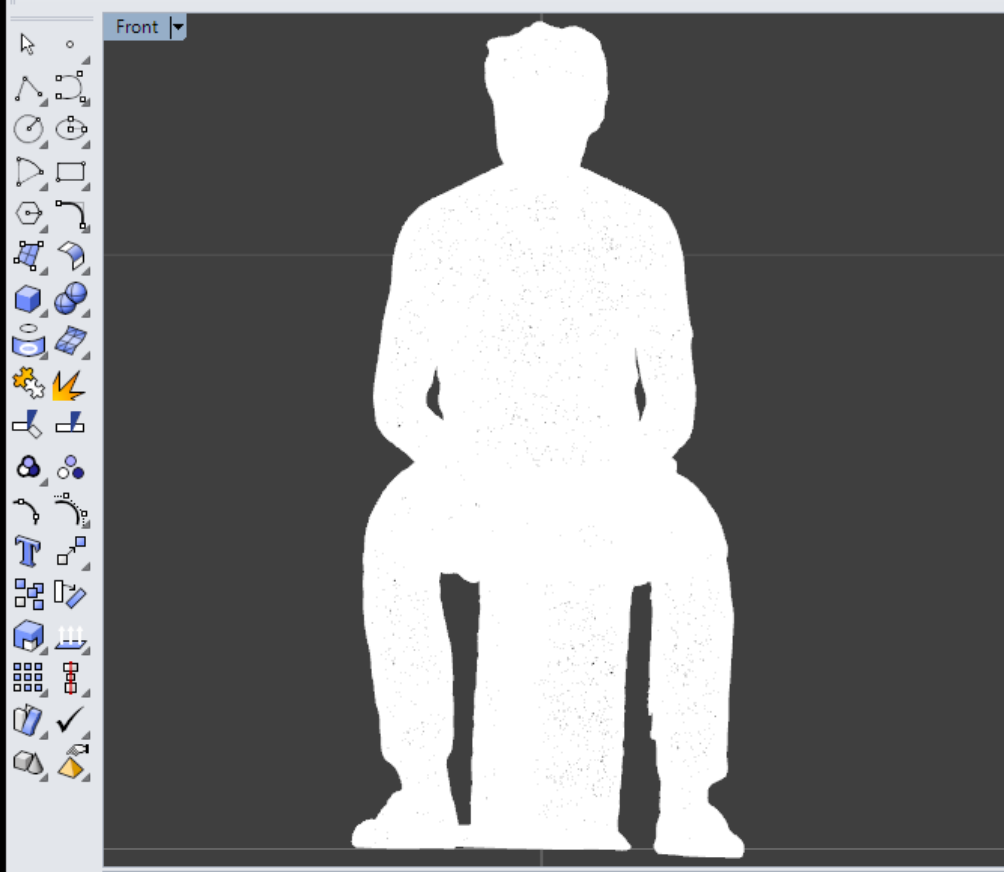








Command: '\_SetView  
Choose coordinate system ( CPlane World ): '\_World  
Choose world view ( Top Bottom Left Right Front Back Perspective TwoPointPerspective ): '\_Front  
Command: GradientView  
Command: GradientView  
Command:



Viewport

Title	Front
Width	604
Height	566
Projection	Parallel

Camera

Lens Length	50.0
Rotation	0.0
X Location	0.019
Y Location	-1.025
Z Location	0.691
Location	Place...

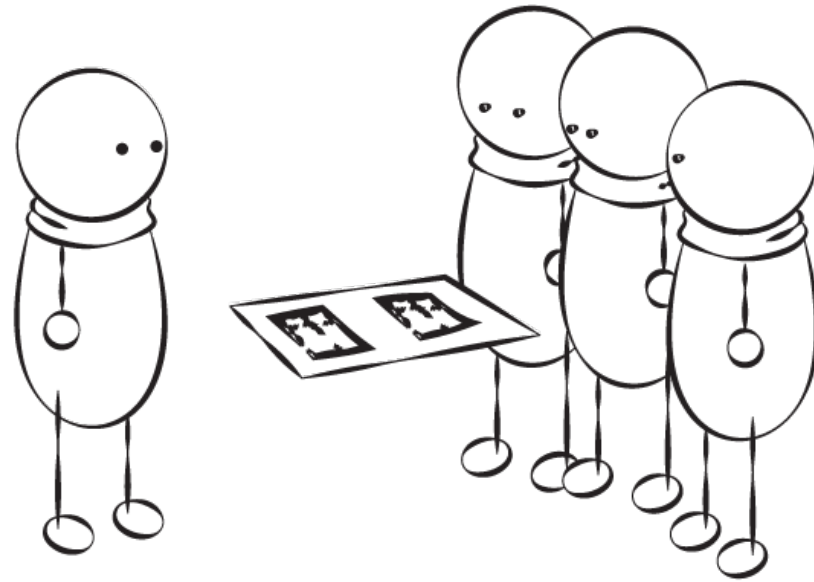
Target

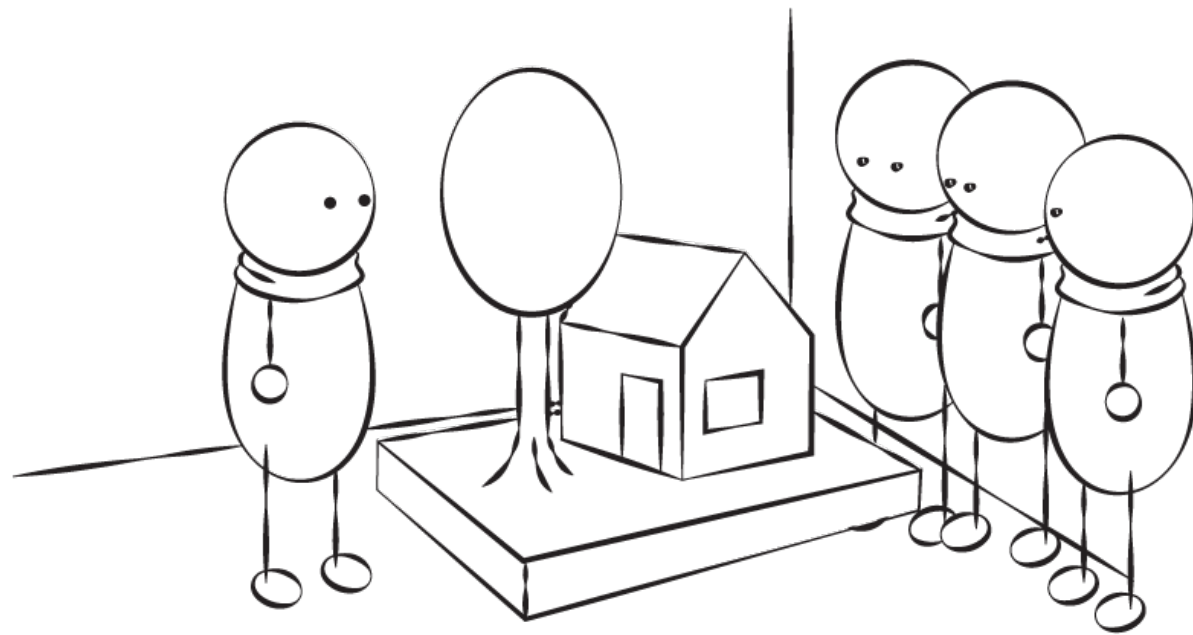
X Target	0.019
Y Target	0.009
Z Target	0.691
Location	Place...

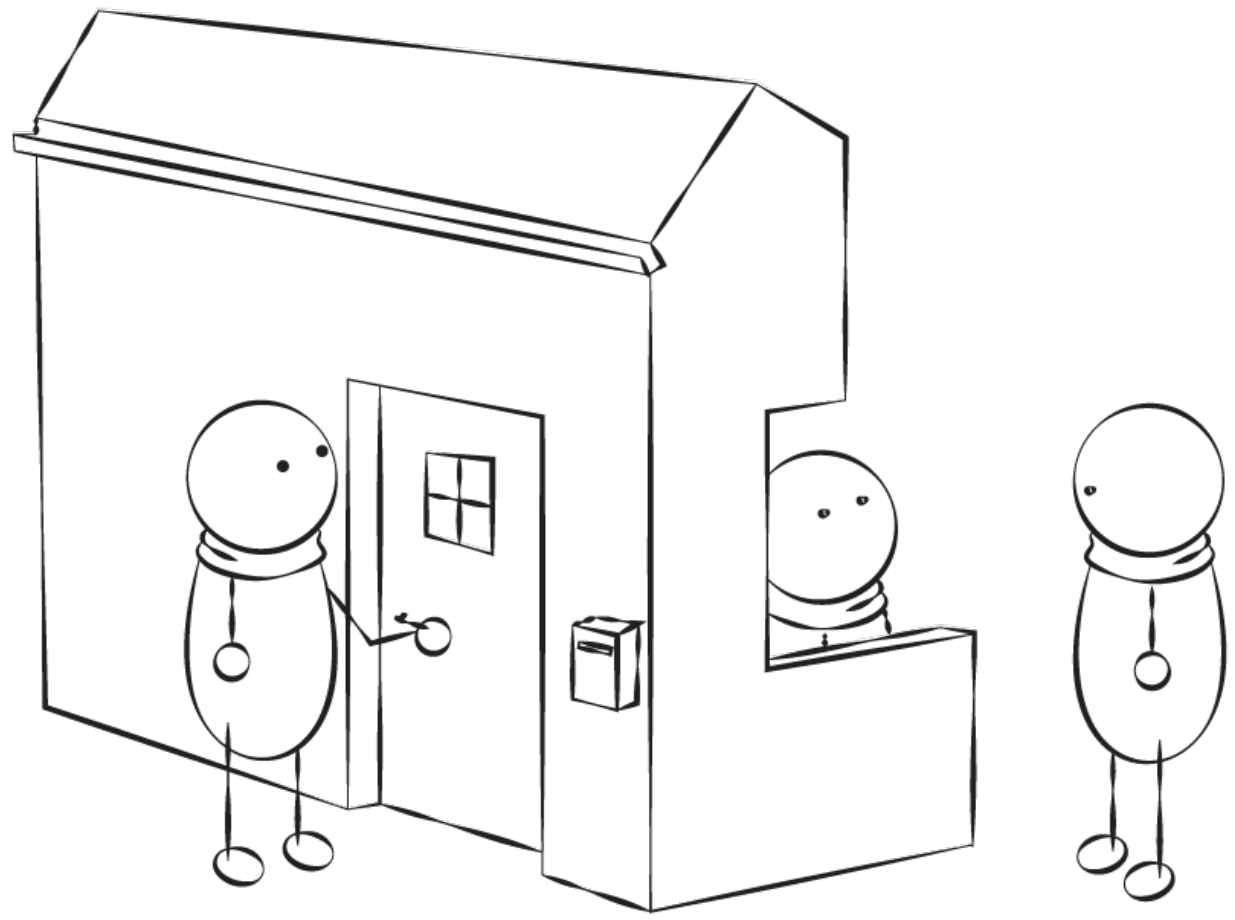
Wallpaper

Filename	(none)
Show	<input checked="" type="checkbox"/>
Gray	<input checked="" type="checkbox"/>

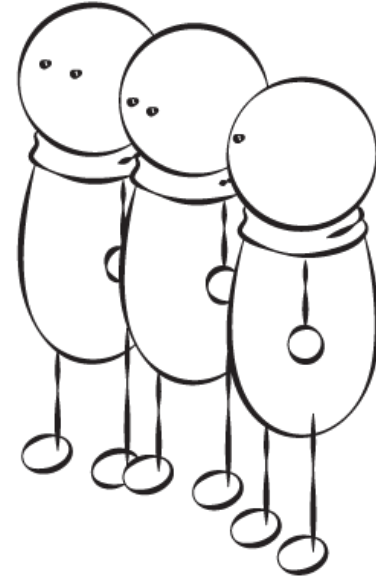
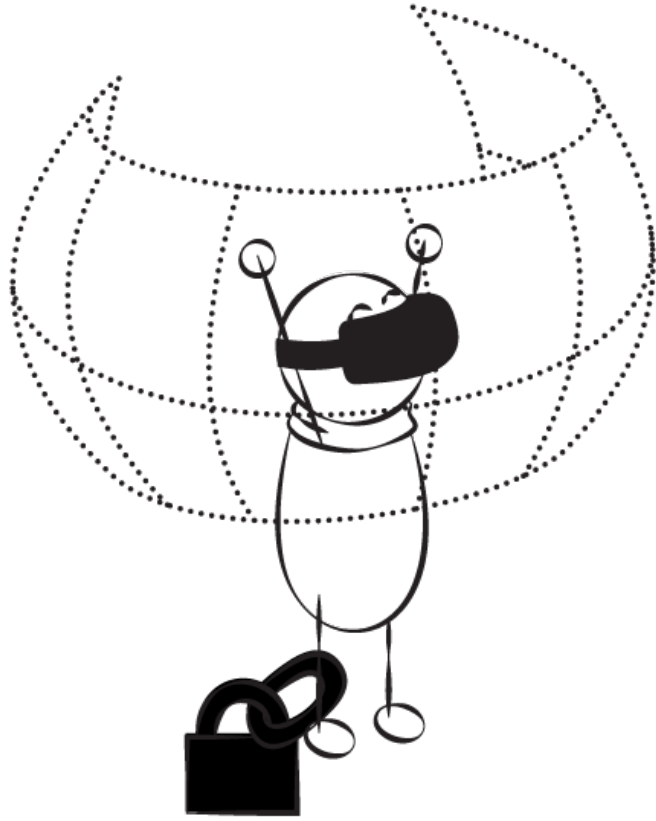
*VR potential*

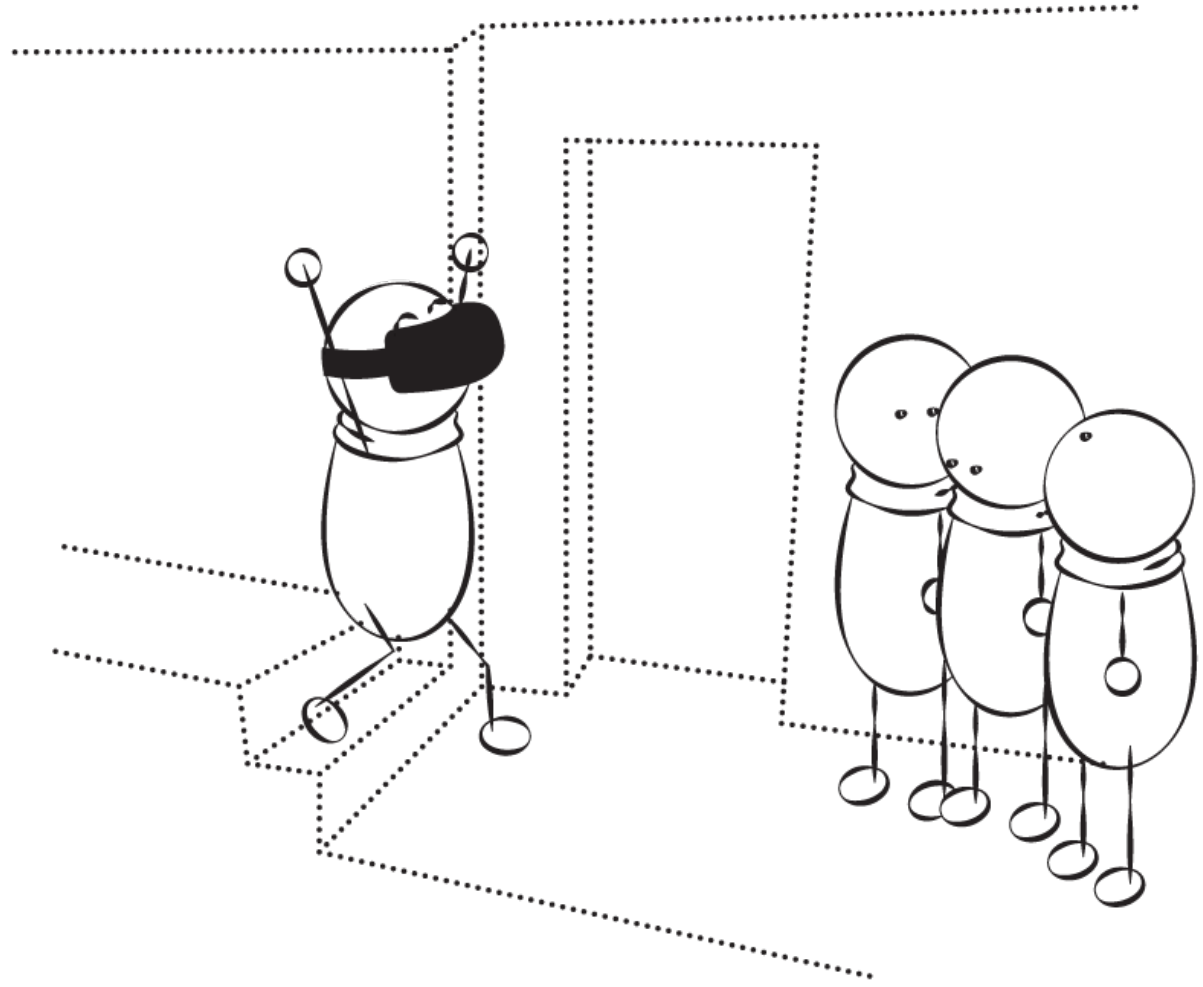


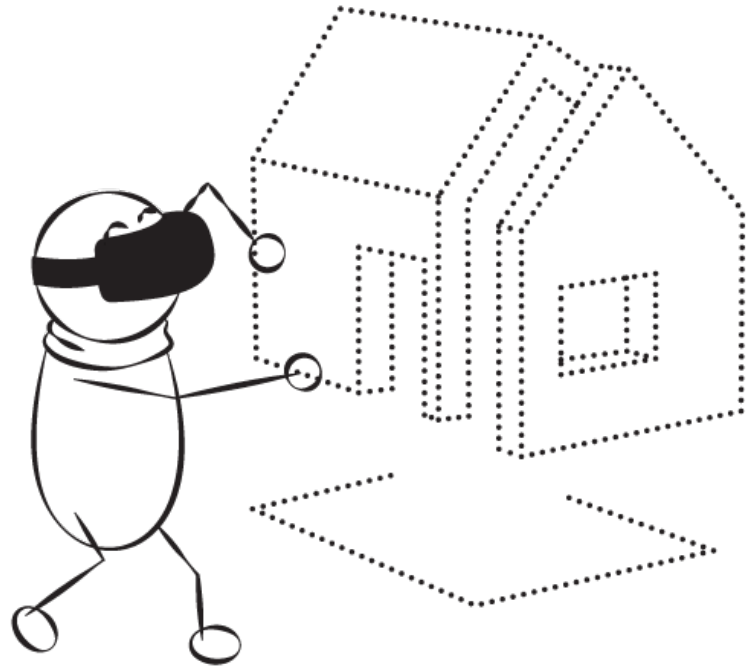
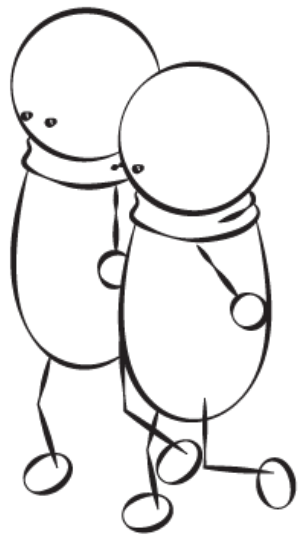












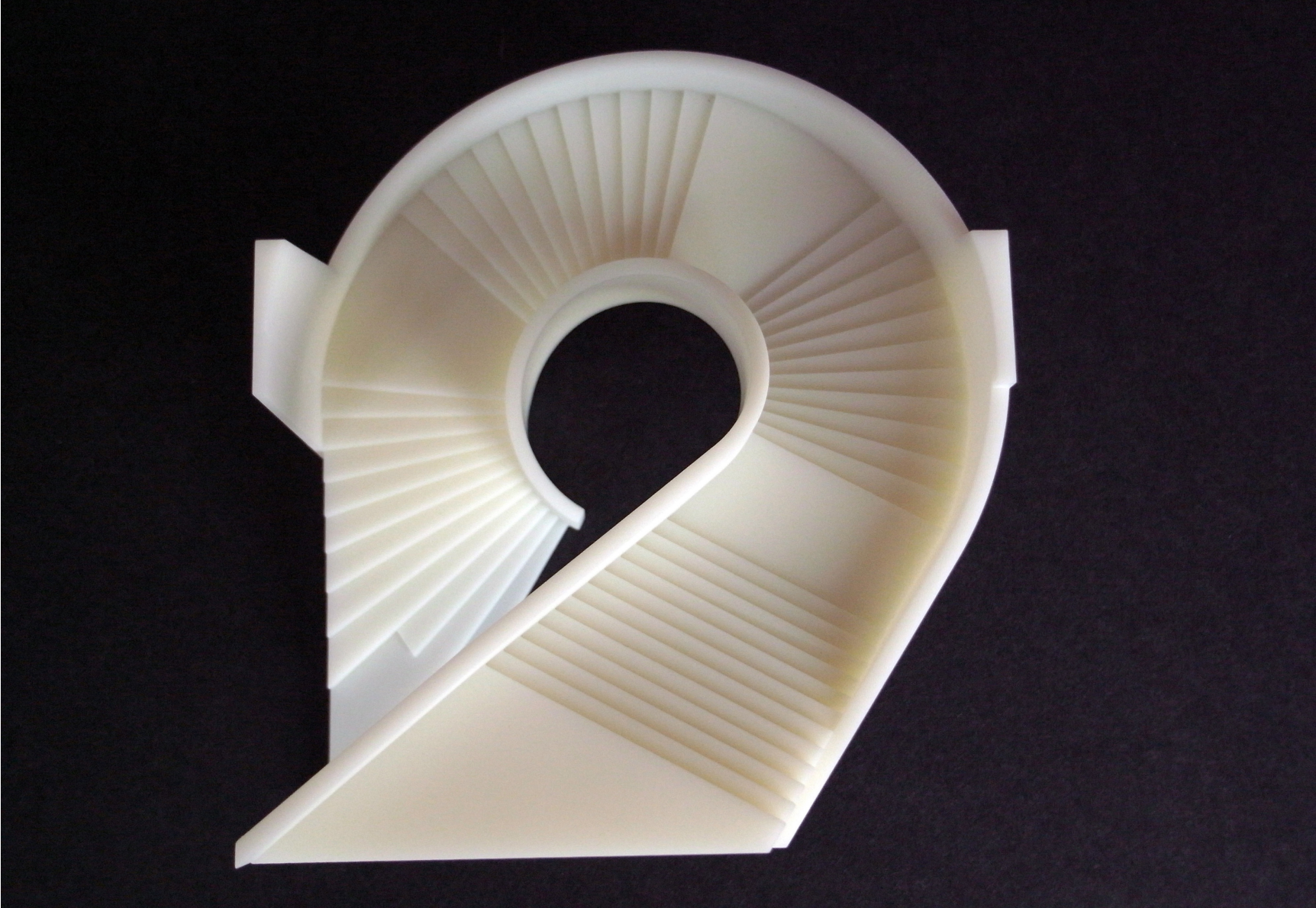












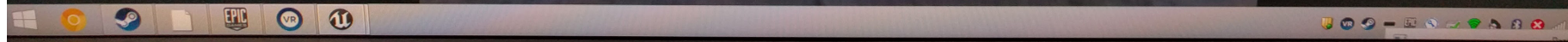





Stations lost optical sync  
There may be something blocking line of sight between the two base stations. If this message persists between sessions you may want to consider switching to cabled sync.  
Received: 10:46:44

Dismiss More info

SteamVR Ready





SITE DEVELOPMENT

FACADE BUILDING 06 / 07 OPTION 1A (PLAT)

FACADE BUILDING 06 / 07 OPTION 1B

FACADE BUILDING 06 / 07 OPTION 2

© November 2017 Herzog & de Meuron Basel Ltd..

Dieses Dokument und die darin enthaltenen Ideen sind das Eigentum von Herzog & de Meuron Basel Ltd. Seine Verwendung ist zwischen dem Kunden und Herzog & de Meuron Basel Ltd. vertraglich geregelt. Für jede anderweitige Verwendung ist eine vorherige schriftliche Genehmigung von Herzog & de Meuron Basel Ltd. erforderlich.

Sofern nicht anders vermerkt, ist sämtliches, in diesem Dokument verwendete Material das Eigentum von Herzog & de Meuron Basel Ltd. Es wurden alle Bemühungen unternommen, sämtliche Quellen- und Urheberrechtsinhaber von urheberrechtlich geschütztem Material, das nicht Eigentum von Herzog & de Meuron Basel Ltd. ist, zu ermitteln und zu bezeichnen. Wir entschuldigen uns, sollte es hierbei zu Fehlern oder Auslassungen gekommen sein. Wir werden uns bemühen, diese Nachweise bei späterer Verwendung zu korrigieren.