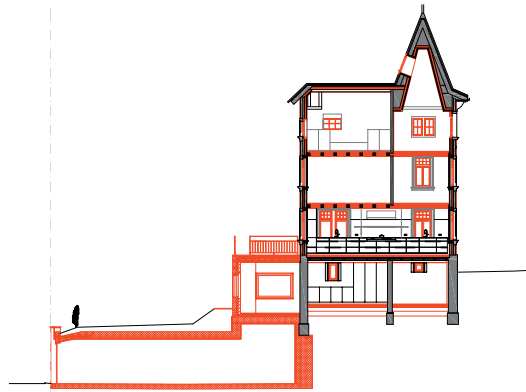
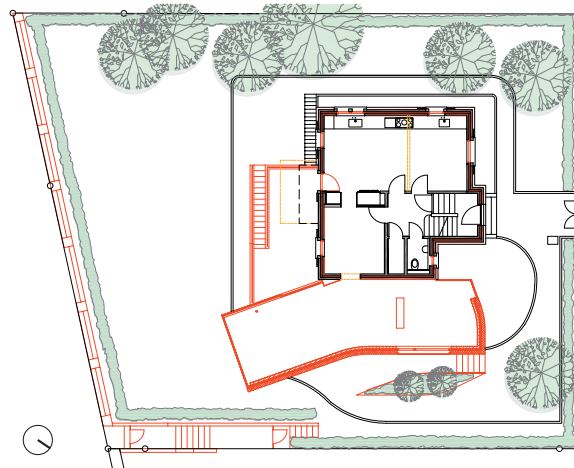


- A Holzfenster (neu)
- B Beton (best.)
- C Holzsim (best.)
- D Holz (best.)
- E Gips 2 cm (best.)
- F Backstein 12 cm (best.)
- G Isofluc H2 8 cm (neu)
- H Backstein 12 cm (best.)
- I Aerogel 1 cm (neu)
- J Röfix Aussenfassade 3 cm (neu)

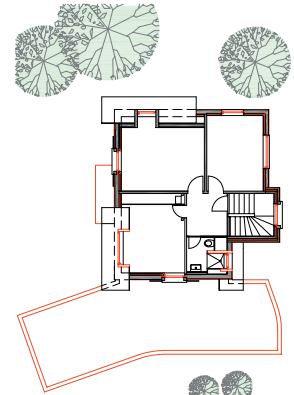
Detailschnitt Fenster



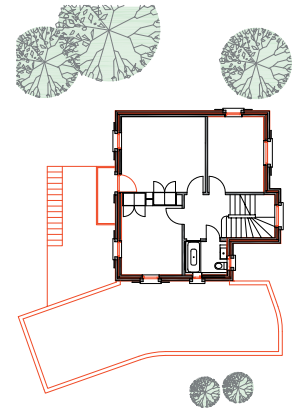
Schnitt



Grundriss EG



Grundriss DG



Grundriss 1. OG